



PENNARD LIFE

Summer 2025

Pennard Community Council

Welcome to Pennard life

Welcome to the Summer edition of Pennard Life - the newsletter produced by Pennard Community Council.

The aim of this newsletter is to inform the community about what the council are doing and our future plans.

We hope you find it interesting and informative.



Inside our summer edition

You can find out about...

WE HAVE SOME VACANCIES

Community Councillors
needed for Southgate

ARE YOU:

- ✓ Are community minded
- ✓ Want to be involved in local decisions
- ✓ Interested in what goes on in your village

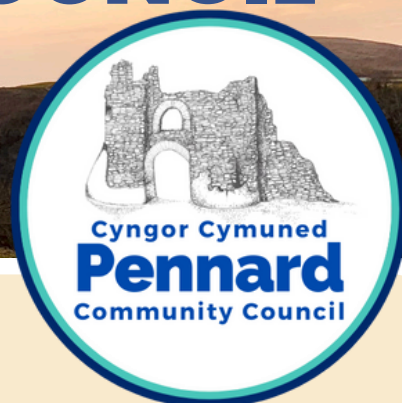
Contact Us:
07825 225567
Clerk@pennardcc.gov.wales



- How to join your Community Council
- Pennard village green
- Changes at our community hall
- Who, what, when and how...
- Summer Fun in Pennard
- Tyfu Pennard community garden
- Pennard Youth Club and activities
- The Community Bus
- The Pennard park Pavilion project
- And much more...



YOUR COMMUNITY COUNCIL



Who are your Community Councillors?

Cllr Rachel Carter	Southgate
Cllr Ralph Cook	Southgate
Cllr Lynda James (Vice Chair)	Kittle
Cllr Cari Jones	Southgate
Cllr Susan Rodaway (Chair)	Southgate
Cllr Will Smith	Southgate
Cllr Cai Carter	Kittle
Cllr Richard Beynon	Southgate



Your Councillors are here to represent you and our community.

Please do contact your Councillors with any questions, issues or concerns.



Find Cllr's contact details on our website: pennardcc.gov.wales



Contact the Clerk:

pennardcommunitycouncil@gmail.com

Phone us:

07825 225567

Join your Community Council – Community members wanted

As well as our Councillors we also welcome members of the Community to join our Committees and Working Groups. This enhances the teams with much needed diversity of knowledge and experience. The following Committees are looking for members of the community to join:

- Planning
- Environment
- Land Management
- Hall

Joining a working group is another great way to get involved. Here are some examples of our working groups:

- Community Hub
- Hall Decarbonisation
- Accessibility in Pennard
- Climate Emergency steering group.
- Youth provision

If you are interested in joining any of these teams and would like to know more, get in touch with the Clerk for more details.



Wedi ei ariannu gan
Llywodraeth y DU

Funded by
UK Government

GOOD NEWS FOR THE COMMUNITY HALL

Tackling the climate emergency!

Thanks to funding from Swansea Rural Anchor (UK Shared Prosperity Fund) we can continue on our journey to decarbonise the hall building. Decarbonisation of the Council facilities is an important step in tackling the climate emergency and moves closer to meeting the goals set out in our Climate emergency plan.

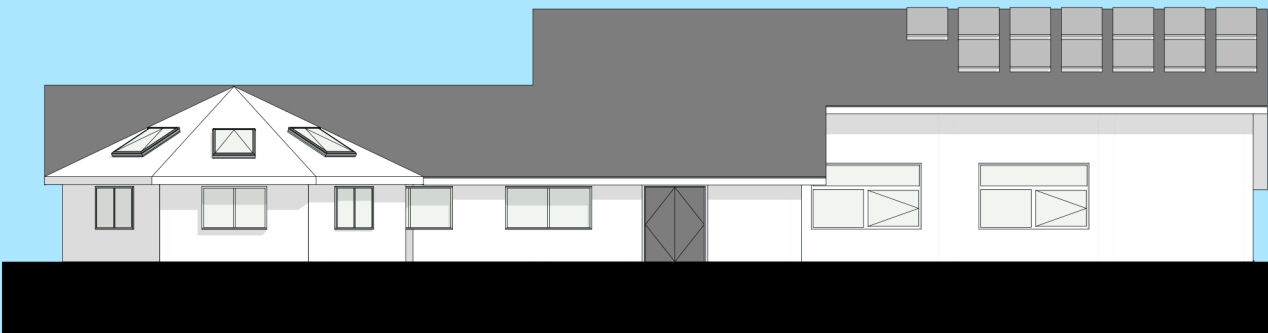
We are currently in the process of choosing a contractor for the installation of solar panels onto the roof of the Community hall, which will help reduce running costs. The next stage will be to improve the insulation to reduce heat loss and make the building more efficient. Soon we will be discussing the installation of rapid car chargers, which will not only be a benefit to residents and visitors but raise much needed revenue.

Watch this space for more news.....

If you would like any information on this project please contact the Clerk:



Clerk@pennardcc.gov.wales



Why not book the Hall for your event!

The Hall is home to lots of different groups and there's something on every day, but we do still have the odd spot available, especially during the Summer.



Do you or a group of friends want to do some roller skating, hold some craft sessions, or just need more space for a get together?

Why not get in touch and I am sure we will be able to accommodate you.



GOWER

FOOD & DRINK

Festival

PENNARD COMMUNITY PLAYING FIELDS
SATURDAY 6 SEPTEMBER 2025

11.00AM - 5.00PM

£3 entry for 16+
(proceeds go to charity)

LIVE MUSIC ALL AFTERNOON

FOOD AND DRINK TO SUIT EVERY APPETITE

FIELD GAMES
TRADITIONAL VILLAGE SHOW

YOU CAN REGISTER ON THE DAY!

Traditional Village Show Categories

Adults: £1 per entry

Best Jam or Marmalade

Best floral display • Best Sponge Cake • Best bread/rolls

Children: 50p per entry

Best scone • Best Art using recycled materials

Best floral display • Best drawing of an animal

Best chocolate cake or brownie



WHAT ACTION TO TAKE IF YOU ENCOUNTER COWS IN PENNARD

As most of you know, the cows from one of our local farms roam freely around Pennard and Southgate in the warmer months when the grass is growing. This is due to historic grazing rights that have been here for many many years. Although this does sometimes cause inconveniences (such as queuing on the road, and having to close your gate), the cows, which are reared for beef, have the benefit of a free range lifestyle and the higher standards of animal welfare associated with it.



In addition, they are responsible for maintaining the grazed aspect of the cliffs which many locals and visitors enjoy. Without livestock grazing the cliffs, they would soon become covered in brambles and gorse and would not have the open aspect they currently do. However, much as the cows do a great job, and are lovely to see, please do keep your distance from them as they can become defensive, especially if they have young calves which they tend to be protective of (Think of parents and their toddlers). The best thing is to give them all a wide berth and definitely no selfies! If you see the bull, rest assured he is generally more interested in the cows than you, but again, just keep a sensible distance.



YOUR COMMUNITY NEEDS YOU! COME AND VOLUNTEER

There are many ways in which you can help your community and make it a better place to live for all the residents. Many local people responded to our appeal for volunteers when the pandemic began. They helped to deliver medicines or do shopping for older and more vulnerable members of the community. they also simply rang people living alone for a chat. This work was greatly valued and has continued to this day.

We still need volunteers for all sorts of areas, such as:

- Phone buddies - ringing an isolated person for a chat
- Posting letters or parcels in the P.O.
- Collecting medication from the pharmacy
- Local shopping
- Helping in the community garden
- Delivering leaflets



If you can spare the odd hour here or there, please contact the Clerk:



Clerk@pennardcc.gov.wales



07825 225567

Pennard Green

Update on the application for village green status

An application has been submitted to register Pennard Green as a Village Green, ensuring it remains protected in its natural state for future generations.

Environmental and Cultural Importance

Covering approximately two acres northeast of Pennard Golf Club, the land is registered common land and a 'green focal space' in the Gower AONB Supplementary Planning Guidance. It provides a vital habitat for wildlife and plant life, supporting biodiversity. The land has also been used for grazing by commoners, a tradition that would continue under village green status. Nearly 100 years ago, artist Lucien Pissarro painted Cefn Bryn from this spot, underscoring its cultural value.

Recreation and Well-being

Unlike formal sports fields, this Green is valued as a peaceful, natural space where people can sit and enjoy the view, appreciate nature, meet friends, or take time to unwind. It provides a safe place for young children to play, offers a resting spot, and supports well-being by allowing people who may struggle with rugged walks to connect with nature. Seasonal activities like blackberry picking also bring the community together and connect people to the landscape.



The Need for Protection

Village Green designation would strengthen legal protections, preventing development and preserving the land for wildlife and community use.

Objection from the Landowner

Following the application's submission, a public notice was issued in October 2024, inviting objections by December. Pennard Golf Club, which owns the land, has formally objected, citing concerns over land use restrictions. The City and County of Swansea is reviewing the application, but no decision timeline has been provided.

How You Can Help

Residents can support the application by sharing memories of using the Green to help demonstrate its historical significance. To contribute, scan the QR code to submit your experiences.



For updates, follow communications from Swansea Council and Pennard Community Council.



Have Your Say!

Community consultation on road safety.



Scan the QR code to take part in our Road Safety survey.



Alternatively:

- Contact the Clerk for a paper copy.
- Copy this URL into your internet browser:
<https://forms.office.com/r/9nqLc7fC0Y>

Pennard Burrows Bio-Blitz Events

Two successful Bio-Blitz events were held during the Spring and Summer months.



Reptile Walk - Friday April 25th

The community were joined by Matt Cooke and Thom Lyons from the Amphibian & Reptile Trust to learn about our incredible reptiles. Over 30 people turned out on a bit of a grey day and although we didn't spot any adders we did see some common lizards.



Butterfly Walk - Saturday June 28th

We were joined by Chris Jones from Natur Hud who brought some live moths for us to view, and showed us some of the amazing species living in the community garden before heading out onto Pennard Burrows to find a variety of butterflies, moths and other insects. Cllr Rachel Carter also shared her knowledge of the coastal flora that can be found on this fantastic coastal habitat. The children thoroughly enjoyed being given the chance to catch and handle butterflies correctly and had lots of fun trying to identify the species correctly. Chris even spotted a rare fungus!



Look out for more Bio-Blitz events in Spring 2026

Biodiversity projects with Gower national landscapes

Under Section 6 of The Environment Act (2016) the Council has a statutory duty to embed biodiversity and ecosystem resilience into all of its planning and functions. Thanks to funding from Gower National Landscapes, we are able to make biodiversity improvements at Pennard burial ground and in Kittle.

Pennard Burial Ground

We are introducing small wildflower areas by reducing mowing intervals and introducing locally native wildflower species commonly found across Pennard and South Gower. The Rose garden will be enhanced by planting beautiful native rose species, shrubs, and plants, a metal rose sculpture and the addition of a new bench. We hope this will create a peaceful, tranquil and reflective space to remember loved ones.

Kittle planters

We have introduced a new planting scheme in the 3 planters outside the businesses in Kittle. Using locally native plants such as common toadflax, evening primrose and ox eye daisy the planters should be more resilient to our drier hotter summers. The plants will establish themselves over the next year or so and provide a bright and colourful addition to the area. The businesses have kindly agreed to water the planters to help the plants establish. We always need help with watering so if you think you can help please pop over with a watering can or a bottle of water!

If anyone would like to volunteer to help to create and maintain these beautiful new areas please contact Cllr Rachel Carter: rachelcarter@pennardcc.gov.wales



Before



After



Before



After



Before



After



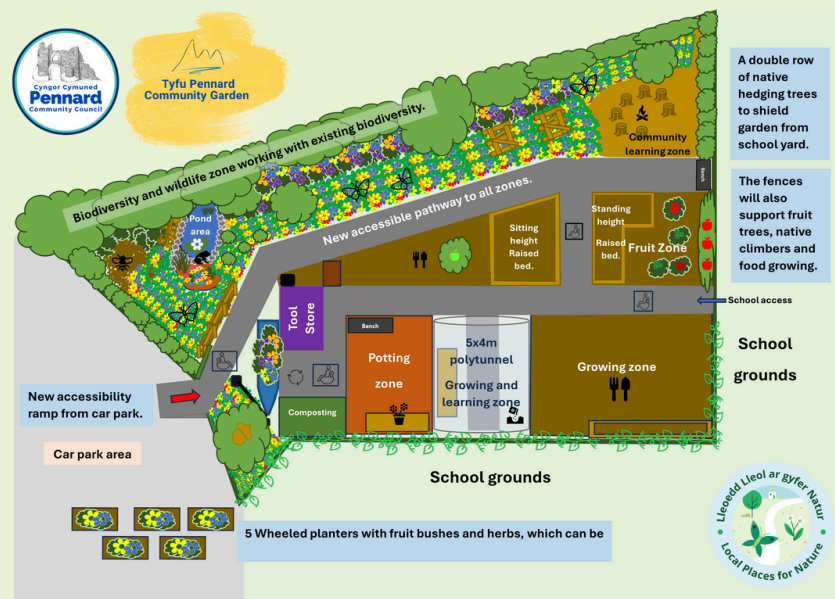
Pennard community council have a project in Pennard, Swansea creating 'Nature on the doorstep' by providing community food growing opportunities whilst enhancing and creating biodiversity.

The aim of the Project:

We want to provide an outdoor space that is inclusive and welcoming to all. A place where groups and individuals can come to learn and share skills, make new friends, enjoy nature and share in the produce grown.

What can the project offer:

- Volunteering opportunities
- An outdoor venue for groups, classes and meetings
- An accessible social space
- A place to learn new skills
- An Inclusive environment for disadvantaged groups
- Learn to grow food
- Learn how to create biodiverse spaces and provide wildlife habitats.



Site facilities:

- Free car parking
- Access ramp and pathways
- A safe secure location
- A variety of outdoor spaces
- Access to toilet



Tyfu Pennard is a 'Local Places for Nature' project funded by Welsh Government



To find out more about the project:

Visit our Facebook page @Pennard community garden

Email us: tyfupennard@outlook.com

Find us behind Pennard Community Hall, Southgate SA3 2AD

Location: <https://maps.app.goo.gl/S2F2jxHLwF2dLbFM9>



Ariennir gan
Lywodraeth Cymru
Funded by
Welsh Government

Tyfu Pennard Community Garden

The Official Opening



Saturday 27th September
12pm - 4pm

Come and join in with the fun and celebrate the completion of the Tyfu Pennard garden project.

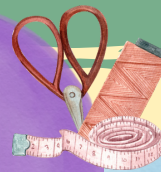
**Free
Ice Cream
Van**



**Fire pit
cooking**



**Craft
Activities**



Bushcraft



There will be lots of activities for both adults and children.



Keep a look out for more information coming soon...



Follow us on Facebook @PennardCommunityGarden



tyfupennard@outlook.com


Tyfu Pennard
Community Garden

#LocalPlacesForNature



Ariennir gan
Lywodraeth Cymru
Funded by
Welsh Government



Come and join in the fun at Tyfu Pennard community garden

It has been fantastic to have so many members of our community visit the garden in the last couple of months. Many come to have a look around, some return to volunteer and most never go away empty handed!

The garden is producing delicious vegetables and herbs which are shared with anyone who comes to say hello!



Its been challenging to plant during these warm dry months, and we are always keen to have new volunteers join the team to help keep everything watered and tackle lots of jobs as the project nears it's completion.

Everyone is welcome to the garden, you do not need to know anything about gardening or ecology, just be keen to get involved. If you don't feel like being active then there are quiet tranquil places to sit, enjoy a cuppa and watch the birds and bees.



Why not bring the children along every Wednesday during the summer holidays for fun activities like, painting, spotting bees and butterflies, or making fat balls for the birds

There are under cover areas, so whatever the weather you can spend time outdoors. We have a range of nature ID guides and books, art materials and more available for you to use.

There are open volunteering sessions every
Saturday 11am - 2pm



Scan the QR code above to register as a volunteer and join the WhatsApp group to keep up to date with what's going on at the garden.



tyfupennard@outlook.com

Three Cliffs, Pobbles and Pennard Castle in 1955 & The All Wales Coast Path Around Pennard Burrows Now

No one can deny that we live in the most glorious part of the Gower. We are also blessed to have such good local facilities for the locals to enjoy. Due to the 14 bus route and National Trust car park, the same amenities and beautiful environment are also easily accessible for the residents of the wider Swansea area and, of course, for tourists, which makes Pennard to a popular destination. Many come to share our good fortune and enjoy walking on the Coastal Path or simply enjoying the impressive views, which also enhances the local economy. Three cliffs, Pobbles Bay and Pennard Castle are very popular destinations. The views are stunning.

Pobbles and ThreeCliffs 1955

This photo was taken by Roy Morris in 1955 and has been kind enough to sharing this photo here:

He says “It was a long time ago when I took that, It was Summer time and I was 18 at the time (19 in the October), in the December I started my National Service and the camera went with me . The camera was a Kodak Sterling 2 folding camera with bellows. It took 620 film and was totally manual so you had to judge all the settings. As far from our phone cameras as you can get !!! My family moved to Pennard from Murton when I was three and I have lived here ever since apart from a year my late wife and I lived in Cilibion”



All-Wales Coastal Path.

A lot has changed since then. In the mid-2000s, the Welsh Government sought to increase access to the coastline for health and recreation and to boost the Welsh tourism economy. The existing coastal paths offered the perfect opportunity to create national continuous coastal walking route in Wales and so the Wales Coast Path was created. The Swansea and Gower Section of the All-Wales Coastal Path was open in 2012 with the aim to allow walkers to be able to trek from Swansea Waterfront to Loughor.

The aim of the Coastal path is making it manageable for the majority. The Coastal Path website that written in 2020, describes the Pennard part of the Coastal Path thus:

“Oxwich to Pennard Cliffs 5.25 miles / 8.25 km A relatively easy walk with open stretches of sandy beaches and great views of Three Cliffs Bay, a spot noted for its beauty.”

<https://www.walescoastpath.gov.uk/places-to-go/carmarthen-bay-and-gower/walks-to-explore-the-area-in-carmarthen-bay-and-gower/?lang=en> .

Walkers and Erosion

Where there is tourism, there are more feet to trample the paths. Due to the nature of the local countryside and the many walkers who aim to follow the Coastal Path around Three Cliffs, Pennard Castle, Pobbles and Pennard Burrows in a relatively short space of time it is no longer the case that it is a “relatively easy walk”. In fact, it far from the truth. I have come around many people attempting to follow the Coastal Path and the way I have been warned how difficult it is and have seen children panicking due the steep inclines.

Being a a very popular destination for walkers and a lot of the erosion is caused by the amount of people using the paths. Because sand isn't easy to walk on people avoid the sandy path so the paths get wider and there is much less greenery. As well as being quite dangerous in places, it is also having a very negative impact on the environment and it's beauty. Paths are becoming very deep, benches are unusable as they are too high as shown in the pictures below:



What To Do About Erosion?

So, what can we do to solve this issue?

We are looking for feedback from residents in the form of personal experiences or photographs. We are also looking for people who are interested in working with us to plan ways to resolve this issue.

If you are interested, please contact: carijones@pennardcc.gov.wales
or clerk@pennardcc.gov.wales

PENNARD YOUTH NEWS



Throughout the summer holidays last year we worked with Boardability CIC to bring some exciting weekly “On Board” sessions to the hall and the park including:

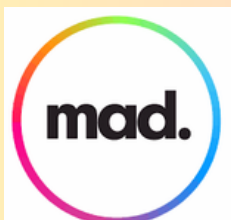
Mountainboarding
Seated boarding
Skateboarding
Surf skating
Long board skate
Dirt scooters
Street scooters
Roller skating

It was such a great success we have arranged more sessions this summer. Look out on social media and book you place - every Tues 9.30 - 12.30 at the hall



Autumn & Winter Youth Sessions

Over the Autumn Winter and Spring we have been working with Swansea MAD to bring some interesting fun filled sessions for our young people. These have been fairly well attended but there is room for more the weekly sessions run on a Tuesday afternoons at 4.30, these sessions are for 11 to 18 year olds and include



DJing
VR gaming sessions
Movie Making
Baking



and loads of other fun stuff...

CITY AND COMMUNITY COUNCILS IN GOWER AND SWANSEA COUNCIL

Who looks after what

by Cllr Lynda James

I have realised over the years that the general public are not really au fait with the different works that the two levels of local government are responsible for. Not all areas of Swansea have a community council or a town council, but all of Gower is covered by one of 13 community councils. Each of these councils is different, the number of councillors being dependant on the number of electors. There is some relationship between the Community/Town Council areas and the electoral wards.

However, some ward areas in Swansea contain more than one community area, for example the Gower electoral ward includes six individual community areas, and similarly Pennard Ward contains both Ilston and Pennard Community councils.

The responsibilities of each community council are generally dependent upon the facilities in that area, for instance, some have community halls to manage, burial grounds, playing fields, playgrounds, community gardens or allotments. Among the services and amenities, they most commonly provide are village halls, playing fields and open spaces, seats, shelters, street lighting and footpaths. In fact, community councils have power to do anything they consider is likely to achieve the promotion or improvement of the economic well-being, social well-being or environmental well-being of their area. All contact and correspondence relating to the work of a community council, should be addressed to the clerk, details of which can be found on each community councils' website or on Swansea Councils website,

PENNARD COMMUNITY COUNCIL,

covers Kittle, Cannisland, Langrove, Pennard, Sandy Lane and Southgate, owns and manages a large community hall within the centre of Pennard Village, which comprises a large sports hall and a smaller meeting room, The Community council also owns the playing field off Park Road with a football pitch, cricket pitch and a pavilion. The field also encompasses a children's playground with equipment for all ages of children and accessible equipment. The Burial Ground, next to St Mary's Church Pennard, is also owned and managed by the community council and is there only for residents of the ward.



The Community Council is also in the process of providing a community garden with growing space, within the grounds of Pennard Primary School, which will be open to everyone.

All contact and correspondence relating to the work of Pennard Community Council, should be addressed to the clerk, Mrs Jan Crocker on tel 07825225567 or email Clerk@pennardcc.gov.wales

ILSTON COMMUNITY COUNCIL,

covers Ilston, Lunnon, Nicholston, Parkmill, Penmaen and Perriswood do not own any property within their ward. However, they have provided seats and picnic benches, notice boards and some very eye-catching litter signage in Torbay, Parkmill and Penmaen. Ilston Community Council keeps a keen eye on the environment on behalf of its residents and the many visitors to their area. To this end the council is in the process of producing an Environmental Plan and a Flood Prevention Plan. The council were very active in assisting residents in the recent floods. To contact their clerk email clerk.ilstoncommunitycouncil@gmail.com. details are available on Swansea Councils Website www/Swansea.gov.uk

Cefnogir gan
Supported by



Cyngor **Abertawe**
Swansea Council

SWANSEA CITY COUNCIL

is a principal authority and has wide ranging responsibilities and powers. I will only fully address a few which most effect most residents and which I am regularly asked about.

WASTE COLLECTIONS

Swansea Council provides recycling and rubbish collections on alternate weeks. The council provides bins for both recycling and rubbish, which residents can put out on the kerbside on the evening of the designated collection day. Friday in the Pennard area. The council collects residual waste fortnightly, with each household allowed to put out three black bags for collection. If bags are not collected by 1pm on the designated day, it can be reported online [www/Swansea.gov.uk/missed collection](http://www.Swansea.gov.uk/missed%20collection) If your whole street hasn't been collected, then the council is likely

to know about it and will return the next day to collect

Large items can be collected by contacting the council on 01292636000 or online at

[www/Swansea.gov.uk/bulky waste](http://www.Swansea.gov.uk/bulky%20waste) There is a charge of £23 for up to 3 items, or £46 for 4-6 items. If you are on income support, income related job seekers allowance, income related employment and support allowance or guaranteed pension credit and Universal Credit you are entitled to a maximum of 3 collections of up to 3 items at half price over a 12 month period. There is a list of items on the website that cannot be collected, such as pianos. All items should be on the pavement and kept dry for collection.

HIGHWAYS

Swansea council are responsible for the maintenance of public highways, pavements and cycle paths. There are programmes of planned works and minor repairs, as well as carrying out regular inspections and acting on issues reported. Our maintenance work also includes grass cutting, managing trees and treating weeds on land owned or managed by the council. Report any problems with our network of roads, footpaths and cycle paths using the relevant forms below. This is especially important in winter months when snow and ice can break up road surfaces forming potholes. Potholes - report online at www.swansea.gov.uk/potholes Emergencies – report online

www.swansea.gov.uk/otherhighwayproblems

Damaged roads - www.swansea.gov.uk/reportdamagedroadsurface

Pavements - www.swansea.gov.uk/reportdamagedpaving

Street lighting – www.swansea.gov.uk/reportstreetlight

Gullies - Gullies and other road drains allow surface water to drain off the road or footpath. The gullies can become blocked by fallen leaves, other rubbish and tree roots. When they block, any surface water on the road or pavement is unable to clear properly. This can lead to large puddles and can even lead to flooding of the road. Maintenance is carried out on the gullies, but problems can still occur. Once a report of a problem is received it is added to the inspection schedule. Response times will vary depending on the location and size of the problem. – www/swansea.gov.uk/gullies Grass cutting - Grass cutting usually starts in March dependent on the weather and ground conditions to keep areas visually clear for drivers and pedestrians, and to help keep areas look attractive and litter free. Some areas are left uncut in a bid to help biodiversity through the creation of 'wildlife corridors', increasing pollinator numbers through the provision of wild meadow areas.

CLEANSING

Fly tipping - On private land it is the responsibility of the landowner to clear the area, and if applicable prove the guilt of the offender. Where the fly tipping constitutes a nuisance or danger of public health, the council can force the landowner to clear the site. Report on www.swansea.gov.uk/reportflytipping

If you think the waste could be hazardous then you should contact the Natural Resource Wales on 03000 65 3000. Animal fouling of pavements - Report dog fouling for cleaning or report a person who allows their dog to foul the highway - www.swansea.gov.uk/dogfouling. The council will not clean up mess on private property.

PLANNING

Swansea Council has a planning portal which includes a lot of information concerning planning services and requirements as well as that of Building Control. www.swansea.gov.uk/planning. All planning applications can be viewed and commented on online – www/swansea.gov.uk/planning. Community Councils are notified of all planning applications in their area and invited to comment on them.

Swansea Council is also responsible for Education and Social Services, these two departments take up a large part of the council's budget, and details are available on Swansea Councils Website

www/Swansea.gov.uk

PARKS DEPARTMENT

Trees – Work on trees falls into the following categories: Urgent work: if a council-owned tree is in such a condition that it poses a very high risk to people or property, we will attend the site as an emergency, normally within 2 hours and always within 4 hours unless there is a major weather event in progress. If work cannot be completed, areas at risk will be cordoned off until resources are available. During major storms and weather events, we will respond as quickly as possible but will need to focus our priorities on keeping roads open for emergency services. Essential work: trees that are perceived as high risk but present no immediate risk to the public will be made safe within an adequate timescale depending on the level of perceived risk identified at the time of inspection. Desirable work: works on trees that are not considered urgent or essential will be classed as desirable and go into our low-risk work programme. Desirable and low risk work will usually be carried out within one year where possible, unless unforeseen circumstances such as storms delay the work further. All inspections are carried out by suitably qualified arborists. The council will not prune or fell a tree that is owned/managed by the council to improve natural light in a private or council owned property. To report any dangerous trees, contact www.swansea.gov.uk/grasscuttingandtrees



Pennard carnival is one of the longest running carnivals in Gower. It commenced in the 1930's, with only a short break during the 2nd World War, and over the recent Covid 19 Lockdowns. Even the Welsh weather has not prevented the carnival going ahead, although it has been a close call on a few occasions. Carnivals go back to the Middle Ages, papers in the British Museum suggest that torchlight processions, mummers plays, games took place in Pennard Castle.

Up to the 20th Century, Pennard Parish had a small population, the locals held local fayres such as the Kittle Fair on Kittle Green, which was partly an agricultural fayre. During the First World War, a different slant was put on to the events. The carnival was held in the grounds of Old Kilvrough Manor under the patronage of Lady Lys, in aid of the County Red Cross Hospitals and the soldiers and sailors of Pennard and Ilston. By 1920 there was no need to raise money for bandages and balaclavas etc, so the proceeds that year went to paying for the Pennard Church Acetylene Gas Lighting Plant.

In 1923 the fete and Bazaar was held in the grounds of Vennaway, and again opened by Lady Lyons. By 1926, Pennard residents were doing their own organising though still in Ilston Cwm. In 1934 a fete with side shows was organised to install electric light in the church and the Parish Hall. The fete was illuminated by the munificence of Mr G Peacock. By 1936 sufficient monies had been raised to finish off paying for the installation of electricity to the church and Parish Hall. The carnival has continued to provide funds for the upkeep of the Parish Hall.

Over the years the carnival has had various locations but for the past 50 years it has been held on Pennard Playing Field. By the 1950's had evolved into the pattern we see today – procession, fancy dress competition, stalls, games, teas served by the WI.

SOUTH GOWER COMMUNITY BUS

As you maybe aware, a group of local residents started the South Gower Community Bus last year. This was done with the assistance of the 4th Region, an organisation established by the Welsh Government to promote sustainable transport, and the bus service was set up as a project through the Pennard Area Community Partnership.



Over the last year, the bus committee have been working hard towards formalising its organisation in becoming a Charitable Incorporated Organisation with its own constitution and bank account.

The service has not been without it's hiccups, as there was a short break when the original bus provider closed down. It is now being provided by DANSA, a not for profit organisation that specialises in Community Bus Services. DANSA have now purchased a new bus for the service and stops have been added to the Linkside Estate.

SO LOOK OUT FOR THE NEW PURPLE BUS.

We are very grateful for all the support by various local groups, such as The Gower Society, Pennard Community Charity, Pennard Community Council, Ilston Community Council and Penmaen Community Hall

Buses run on Tuesdays and Thursdays.

From Nicholaston to Mumbles	Run 1	Run 2	Run 3	From Mumbles to Nicholaston	Return 1	Return 2	Return 3
Nicholaston Cross	0900	1100	1330	Mumbles (Bracelet Bay)	1000	1230	1430
Penmaen House	0901	1101	1331	Oystermouth (Bus Stop)	1007	1237	1437
Penmaen Church	0902	1102	1332	Northway, Bishopston	1019	1249	1449
Parkmill (Shepherds)	0904	1104	1334	Kittle (Shops)	1022	1252	1452
Sandy Lane / Gower Inn	0905	1105	1335	Pennard (St Mary's Church)	1024	1254	1454
Cannisland Park (turnaround)	0910	1110	1340	Pennard Primary School	1027	1257	1457
Pennard Church	0912	1112	1342	Linkside Estate	1028	1258	1458
Pennard Primary School	0914	1114	1344	Southgate (Three Cliffs Café - turning point)	1032	1302	1502
Southgate (Three Cliffs Café - turning point)	0919	1119	1349	Pennard Primary School	1035	1305	1505
Linkside Estate	0920	1120	1350	Pennard (St Mary's Church)	1038	1308	1508
Pennard Primary School	0922	1122	1352	Cannisland Park (turnaround)	1042	1312	1512
Pennard Church	0924	1124	1354	Sandy Lane / Gower Inn (A4118)	1045	1315	1515
Kittle	0926	1126	1356	Parkmill (Shepherds)	1046	1316	1516
Northway, Bishopston	0929	1129	1359	Penmaen	1048	1318	1518
OYSTERMOUTH (Bus Stop)	0941	1141	1411	Penmaen House	1049	1319	1519
Mumbles (Bracelet Bay)	0943	1143	1413	Nicholaston Cross	1050	1320	1520

The service relies heavily on grants at present with some monies from tickets sold and the refunds from the Welsh Government for those using the various bus passes. So the service needs more people to use it in order to make it a viable service in the long term - Remember: USE IT OR LOSE IT.

TICKETS Adults single fare £3, return £5.50 - Children 5 - 16 £2 return £3.00

Information can be found on Facebook and WhatsApp under: South Gower Community Bus.



Pennard Pavilion Update

Last year we appointed Down to Earth to engage with the community about a replacement building on the site of the existing pavilion at the playing field. Their original presentation about the project, with information about the various phases of the project, timescales, and the estimated costs of each can be found on our website and is worth a look. It can be found under “Council Facilities” followed by “Playing Fields” and then follow the link in the text.

Many of you will have filled in their online survey, or spoken to them in person, and the results of this were in our last newsletter but are also available on our website (under “About”, followed by “Community Engagement”)

This phase (Phase 1) of the project employing Down to Earth cost £18400 and was funded by Pennard CC through money set aside from the precept (money collected as part of your council tax bill) over several years along with donations from the buy a brick scheme for a replacement pavilion this reserve at the time was around £40,000.

The council voted to put the next phase (Phase 2) of the project out to tender, which it did, out of the 8 companies who were invited only one company, Down to Earth, felt able to put in an application before the deadline.

Phase 2 included designing the proposed building, carrying out appropriate surveys, and applying for grant funding ready for phase 3. For this, Down to Earth tendered at a cost of £52,800, and at February’s full council meeting, it was agreed to appoint them, subject to obtaining sufficient grant funding in addition to the reserve to cover this.

Many of you provided useful feedback in terms of what you would like to see from a replacement building, and we hope you will continue to do so, should we get the necessary funding to progress.



Pennard Community Council
www.Pennardcc.gov.wales
07825 225567i

AND FINALLY

Just before going to print we had 4 new Elected Community Councillors join us.

Your newly elected Councillors for Southgate are:

Cllr Clive Scott

Cllr Rebecca Donnachie

Cllr Jon Dickson

Cllr Steven Rodaway

We still have two vacancies, so if you have been inspired by all the wonderful things going on contact the Clerk on 07825 225567.

PENNARD MONTHLY MARKET

Pennard Market is having a Summer break!

It will be back soon at the usual time:

9am -1pm

1st Saturday of each month

October to May



Have a Wonderful Summer